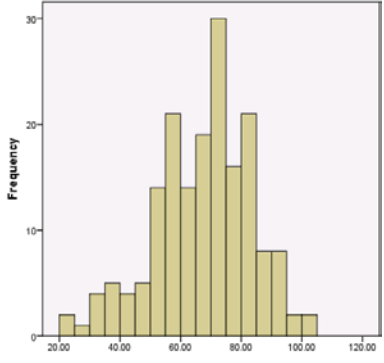
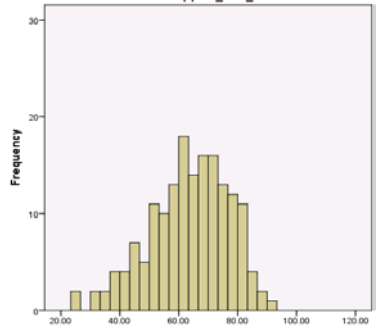
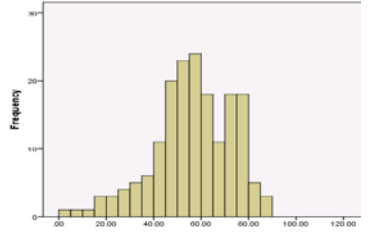


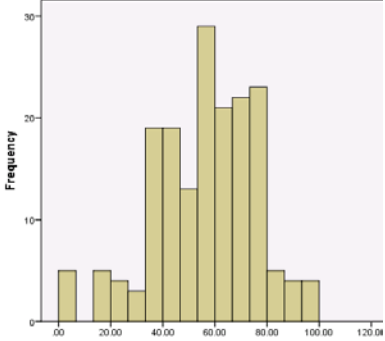
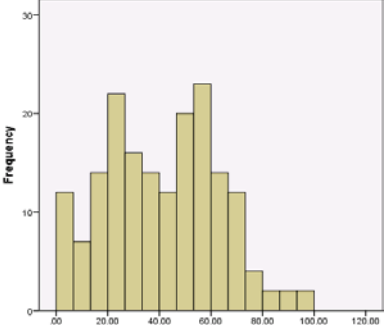
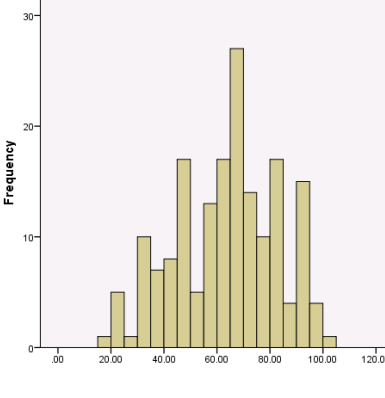
Summary of Comprehensive Alcohol/Substance Abuse Campus Efforts Compiled from the 2012 College Alcohol Survey (Weighted)

Component (Weight)	Items included in Component (Item Weight)	Component Histogram
Policy & Enforcement (21.06)	<ol style="list-style-type: none"> 1. An alternative beverage is required at public functions that serve alcohol (7.7) 2. Food is required at public functions that serve alcohol (7.4) 3. Individuals who serve alcohol by the drink on campus required to receive server training (9.8) 4. Tailgating functions prohibit or confine alcohol consumption, or make other efforts (8.6) * 5. Private off-campus alcohol retailers are not allowed to have happy hour ads in the student newspaper (6.1) 6. Private off-campus alcohol retailers are not allowed to have price specials ads in student newspaper (6.7) 7. Campus policy addresses alcohol beverage industry sponsorship of campus events/promotions (8.5) 8. Event advertising may not cite alcohol's availability (7.8) 9. Students face judicial charges for off-campus alcohol violations (12.5) 10. Campus uses methods to measure BAC with enforcement (5.0) 11. Campus receives emergency room reports related to alcohol (7.4) 12. Health Center collects data on alcohol-related consumption/injury (7.8) 13. Campus keeps BAC records for students with alcohol violations (4.9) 	
Support & Intervention Services (16.7)	<ol style="list-style-type: none"> 1. Services for recovering students are included in prevention efforts (10.5) 2. Individual motivational interviews are included in prevention efforts (14.5) 3. Identification of and referral for substance abuse problems are included in prevention efforts (12.4) 4. Packaged internet-based assessment/feedback approaches used (7.2) 5. Degree to which students drinking problems can receive counseling assistance at a variety of locations (11.0) * 6. Campus agency offers group counseling specifically for students who are problem drinkers (12.8) 7. Campus agency offers support groups specifically for students with alcohol-related negative effects (7.6) 8. Campus has an Employee Assistance Program for employees with a drinking problem (7.4) 9. Peers have role with initial intervention/referral to counseling (8.0) 10. Paraprofessional staff receives training about students with drinking problems (8.6) 	
Prevention & Education (19.8)	<ol style="list-style-type: none"> 1. Campus orientation program for new students deals with alcohol/substance abuse (17.5) 2. Campus orientation program for parents deals with alcohol/substance abuse (13.9) 3. Campus has a focus period of time for alcohol education and prevention efforts (10.4) 4. Campus has a focus period of time for non-alcohol substance education and prevention efforts (9.9) 5. Degree that various approaches are included in alcohol/substance abuse education/prevention efforts (19.1) * 6. Campus uses peers whose primary focus is alcohol/drug abuse (10.4) 7. Degree to which campus pays special attention to unique needs of sub-populations (18.8) * 	

* Represents a compilation of more than one question

All items included are developed from questions included in the 2012 College Alcohol Survey, the national longitudinal survey on alcohol, tobacco, other drug and violence issues at institutions of higher education, conducted triennially since 1979. The weighting for components and items is based on responses from national and state leaders (34 of the 52 Network leaders); unweighted histograms show each component and item with equal weights. The data is from the 176 public and private four-year institutions responding to the 2012 College Alcohol Survey. Precise wording of questions is found with survey results posted on the project website. The College Alcohol Survey is conducted by David S. Anderson, Ph.D. (George Mason University) and Angelo F. Gadaletto, Ph.D., (West Chester University).

Summary of Comprehensive Alcohol/Substance Abuse Campus Efforts Compiled from the 2012 College Alcohol Survey

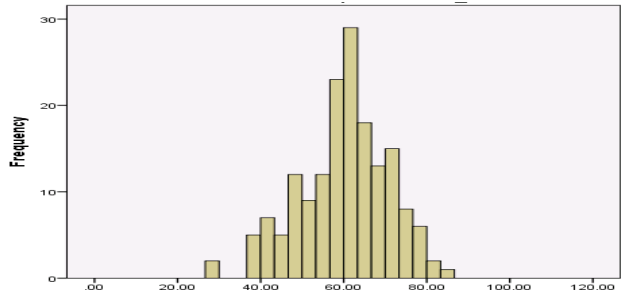
Component (Weight)	Items included in Component (Item Weight)	Component Histogram
Curriculum & Training (10.0)	<ol style="list-style-type: none"> 1. Campus provides curricular content support for faculty on drug/alcohol issues (12.4) 2. Campus provides faculty with policy and procedure awareness on drug/alcohol issues (18.9) 3. Campus provides faculty with sample teaching/lesson plan modules on drugs/alcohol (10.2) 4. Campus prepares faculty to identify students with alcohol/drug problems (21.4) 5. Campus prepares faculty to intervene with students having drug/alcohol problems (18.9) 6. Campus paraprofessional staff trained to deal with students having a drinking problem (18.3) 	 <p>A histogram showing the frequency distribution of item weights for the Curriculum & Training component. The x-axis represents item weight from 0.00 to 120.00, and the y-axis represents frequency from 0 to 30. The distribution is unimodal and slightly right-skewed, peaking at a frequency of approximately 29 for an item weight of 60.00.</p>
Evaluation (12.5)	<ol style="list-style-type: none"> 1. Campus conducted survey in past 2 years on student behaviors, attitudes, knowledge & perceptions (19.3) * 2. Campus gathered data on percent of time alcohol is involved in student behavioral infractions (16.3) * 3. Campus conducted formal assessment of drug and alcohol program effectiveness in past few years (17.7) 4. Campus used formal research procedures to measure its efforts in the last several years (11.9) * 5. Campus conducted formal assessment of policies, procedures and practices related to legal liability (9.9) 6. Campus systematically gathered data on use of false IDs to purchase alcohol (4.7) 7. Campus conducted survey on faculty infusion of substance issues in their courses, knowledge of substance abuse policies, and awareness and skills on responding to problem behaviors (20.2)* 	 <p>A histogram showing the frequency distribution of item weights for the Evaluation component. The x-axis represents item weight from 0.00 to 120.00, and the y-axis represents frequency from 0 to 30. The distribution is unimodal and slightly right-skewed, peaking at a frequency of approximately 23 for an item weight of 60.00.</p>
Planning & Collaboration (19.9)	<ol style="list-style-type: none"> 1. Campus has an alcohol/substance abuse education coordinator or specialist (17.9) 2. Campus has student programming/peer education group for alcohol/substance abuse issues (8.5) 3. Campus has task force for drug and alcohol concerns (12.5) 4. Campus has task force/partnership with surrounding community (11.9) 5. Level of collaboration with campus/community groups (11.3) * 6. Campus participates in statewide consortium (68.3) 7. Campus has strategic plan (11.5) 8. Strategic plan has measurable outcomes and timeline, roles, responsibilities (11.2) 9. Peers have role with workshops, awareness, guest lectures, events, policy review (6.9) * 	 <p>A histogram showing the frequency distribution of item weights for the Planning & Collaboration component. The x-axis represents item weight from 0.00 to 120.00, and the y-axis represents frequency from 0 to 30. The distribution is unimodal and slightly right-skewed, peaking at a frequency of approximately 27 for an item weight of 70.00.</p>

2012 College Alcohol Survey: The national longitudinal survey on alcohol, tobacco, other drug and violence issues at institutions of higher education

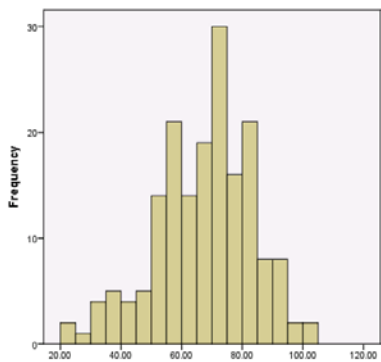
David S. Anderson, Ph.D. Professor of Education and Human Development
 Director, Center for the Advancement of Public Health
 George Mason University
 MS 1 F5, Fairfax, VA 22030
 703-993-3698
caph.gmu.edu

Summary of Comprehensive Alcohol/Substance Abuse Campus Efforts Compiled from the 2012 College Alcohol Survey (Weighted)

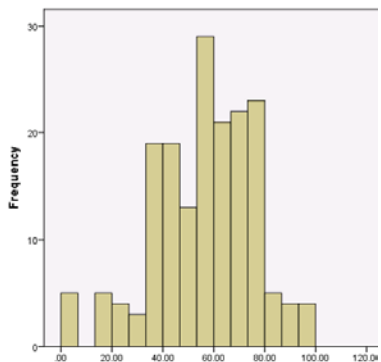
WEIGHTED SCORES - - - OVERALL: Mean Score 60.2



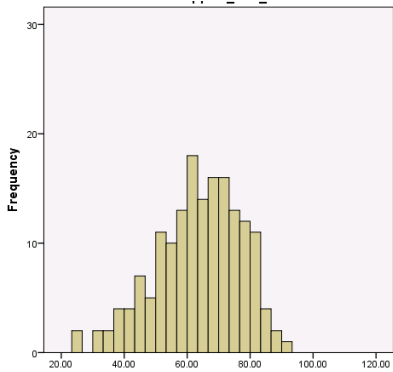
**Policies and Enforcement
Mean Score: 67.5**



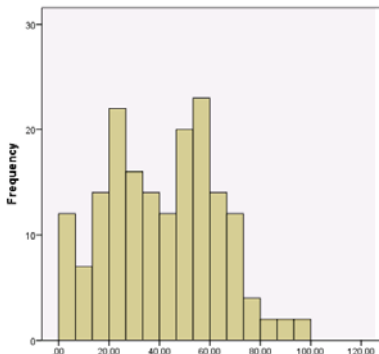
**Curriculum and Training
Mean Score: 56.0**



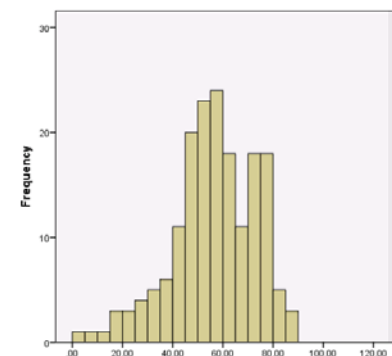
**Support and Intervention
Mean Score: 63.7**



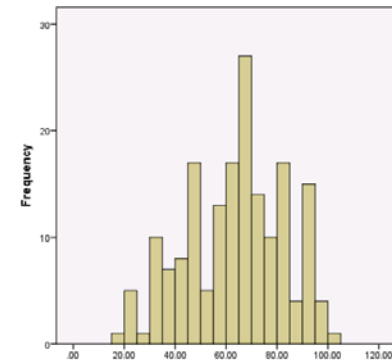
**Evaluation
Mean Score: 41.3**



**Prevention and Education
Mean Score: 56.2**



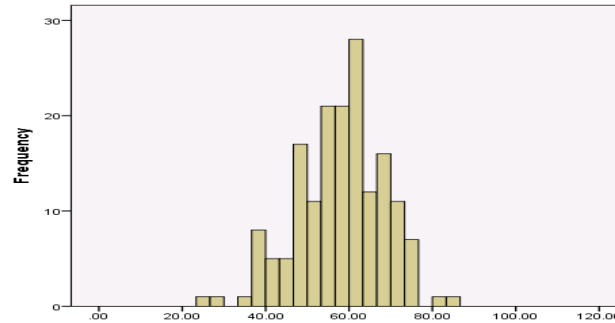
**Planning & Collaboration
Mean Score: 63.9**



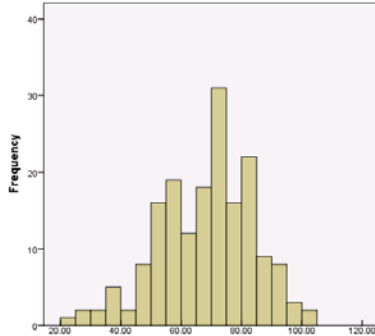
Summary of Comprehensive Alcohol/Substance Abuse Campus Efforts

Compiled from the 2012 College Alcohol Survey

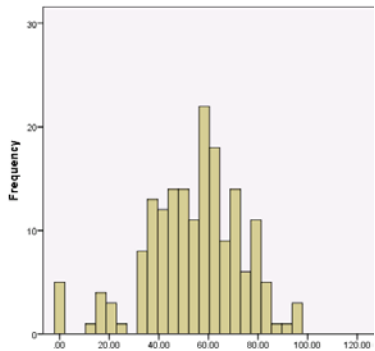
UNWEIGHTED SCORES - - - OVERALL: Mean Score 58.0



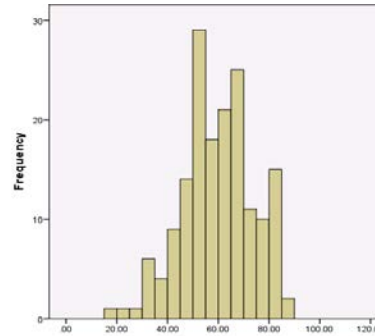
Policies and Enforcement
Mean Score: 68.3



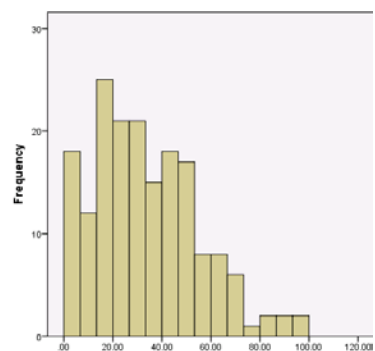
Curriculum and Training
Mean Score: 54.3



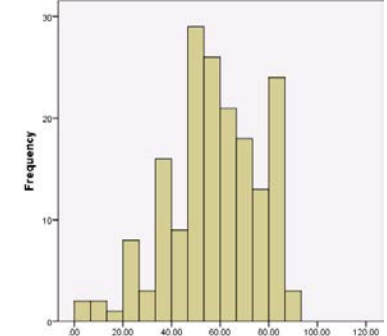
Support and Intervention
Mean Score: 59.8



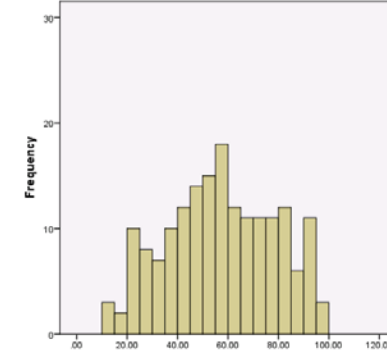
Evaluation
Mean Score: 33.6



Prevention and Education
Mean Score: 57.3



Planning & Collaboration
Mean Score: 57.1



2012 College Alcohol Survey: The national longitudinal survey on alcohol, tobacco, other drug and violence issues at institutions of higher education

David S. Anderson, Ph.D. Professor of Education and Human Development
 Director, Center for the Advancement of Public Health
 George Mason University
 MS 1 F5, Fairfax, VA 22030
 703-993-3698
caph.gmu.edu