

## Welcome!

It's hard to believe the first half of the academic year is almost over. As we kick off another calendar year in serving commuter and adult students, the Commission for Commuter and Adult Learners directorate body hopes to be of great service to you. Take a few minutes to read this E-News and feel free to print or forward this to others on your campus that may benefit from the news we have to share. If you are looking for something specific or have something (best practice, article, or new development) to share, let us know and we will work to include it in our next edition. Email **Dana McKoy** at [mckoyd@uncw.edu](mailto:mckoyd@uncw.edu) with your submissions.

## ACPA/NASPA Joint Meeting Events & Sponsored Programs

The 2007 ACPA/NASPA Joint Meeting in Orlando is approaching soon! If you haven't yet made arrangements to attend, begin by visiting the ACPA Web site at [www.2007jointmeeting.org](http://www.2007jointmeeting.org).

The Commission for Commuter & Adult Learners will facilitate several events at the meeting. To give you a preview, see the list below. (More detailed information including room locations will be provided in the near future.)

- **Commission Directorate Breakfast:** Sunday, April 1, 8:00 - 10:00 am.
- **Commission New Member Orientation Lunch:** Sunday, April 1, 11:30 am - 1:00 pm.
- **Commission Directorate Meeting:** Sunday, April 1, 1:00 - 5:00 pm.
- **Commission Business Meeting & Awards Ceremony:** Tuesday, April 3, 2:30 - 5:00 pm.
- **Commission Social:** Tuesday, April 3, 7:00 - 9:00 pm.

The Commission is also proud to sponsor three great programs listed below. You have the opportunity not only to attend these three sessions, but there will be many other great programs with a commuter or adult focus to be announced in the general convention schedule soon. We hope to highlight those in the next edition of our E-news.

- **More Than a Place to Park: Successful Programs for Commuter Students**  
**John Garland, Director, National Clearinghouse for Commuter Programs, University of Maryland**  
Students living off-campus comprise over 80% of students enrolled on our campuses nationwide. Attention to this important population of our campus community is often overlooked. This presentation will focus on services and programming endeavors from a variety of institutions from around the country. Several professionals will share details of successful programs from their own campuses and participants will be able to engage in dialogue with the panel and others on the college experiences of commuter students.
- **Baby Blues: Our Responsibility for Serving Student Parents**  
**Heather Gasser, Assistant Director, Undergraduate Initiatives, University of Arizona**  
With significant attention paid toward parents of the traditional-age students on our campuses (including parent associations, newsletters, parents' weekend), little has been done to make our campuses more friendly to students who are parents themselves. This presentation will explore the many needs of student parents on campus and demonstrate through one campus's collaborative response, the possible opportunities to improve the campus climate through services and programs for this overlooked population. Note, this presentation addresses alternatives to the building of a child care center.

- Creating Community: Fostering Learning Communities for Commuter & Transfer Students**  
**Joseph Connell, Assistant Director, Education Enrichment Center, William Paterson University**  
 Learning Communities have emerged as a central factor to student success; however, reaching students furthest from the institution's center has proved more challenging. To increase commuter and transfer student success and involvement on a primarily residential campus. Marist College created several learning communities in the 2005-2006 Academic Year. This program highlights the development of these communities, the students' achieved outcomes, and offers participants strategies to utilize on their campuses.

## Call for Nominations for New Commission Directorate Members

**Amy Parsons-O'Keefe, Director, Commuter Services**  
**Texas Woman's University**

Are you a professional working with commuters and/or adult learners with some great experience to offer? Or are you relatively new to the field and want to find a great way to network with other professionals and discover the latest trends in our field? If you are not already a member of the Commission for Commuter Students & Adult Learners Directorate, it's time to get involved! Nominations and applications are now being accepted for this 15-member board which oversees the agenda for all Commission activities relevant to commuter and adult student advocacy, programs, services and research. Representatives are elected annually by the Commission constituency to a three-year term of service that includes committee involvement (see below), networking with colleagues, program presentation, and leadership opportunities.

### About the Commission for Commuter Students & Adult Learners

The Commission for Commuter Students and Adult Learners provides a network of contacts and support for those serving commuter students and adult learners. Opportunities for learning about effective programs and services, encouraging original research, sharing data, and discussing the needs/concerns of these populations are a large part of the Commission experience.

### Directorate Member Responsibilities

Prior to formally submitting their names for balloting, all nominees must agree to fulfill the following expectations and responsibilities:

- Attend and participate in all Directorate business sessions for each ACPA National Convention held during the member's term of office, even if institutional funds are not available. (Note: For the 2007 convention, new members will be required to attend the formal Directorate Business Meeting scheduled for Sunday, April 1, 2007, 8:30 am - 5:00 pm. Information regarding location, as well as the mandatory orientation program and meeting time changes, if any, will be communicated to nominees and others prior to the upcoming Commission elections.)
- Assume a leadership role by chairing a Commission committee, task force or special project during the term of office.
- Respond to all requests for information and feedback from the Chair, Chair-Elect and other Directorate members in a timely fashion.
- Resign if these duties cannot be fulfilled.

### Commission Committees/Special Projects

Commuter/Adult Learner Task Force  
 Affirmative Action Committee  
 Commission Awards Committee  
 Convention Carnival  
 Emerging Issues  
 Liaison to Commissions/Committees

Member Management Committee  
 National Convention Sponsored Programs Committee  
 Newsletter  
 Nominations and Elections committee  
 Self-Study Project

## **Nomination Instructions**

If you are interested in serving on the Directorate, please complete the Candidate Information Form attached to this email.

ALSO, if you know of colleagues too modest to nominate themselves, please submit nominations on their behalf. You can either 1) send their names and addresses via e-mail to Amy Parsons-O'Keefe by Sunday, January 21, 2007 or 2) reproduce the application as many times as needed and forward to your nominee(s) for completion. All completed Candidate Information Forms are due Sunday, February 11, 2007, and should be sent to:

Amy Parsons-O'Keefe  
Director of Commuter and Non-Traditional Student Services  
Texas Woman's University  
Phone: 940-898-3227  
Fax: 940-898-3603  
E-mail: [aparsonsokeefe@mail.twu.edu](mailto:aparsonsokeefe@mail.twu.edu)

We look forward to hearing from you soon!

## **Advocacy through Art: Organizing Commuter & Adult Student Art Exhibits**

**Dana McKoy, Coordinator of Commuter & Non-Traditional Student Services  
University of North Carolina Wilmington**

Pulitzer Prize-winning poet **Amy Lowell** once said, "Art is the desire of a man to express himself, to record the reactions of his personality to the world he lives in." Indeed, the creative expression of drawing, painting, sculpture, photography and other artistic outlets is a highly personal and often cathartic process for the individual.

In addition, the public exhibition of art can also be a powerful yet non-threatening way to bring exposure to various issues or even communities of people on your campus. Art exhibits highlighting stated social themes or constituencies encourage even casual observers to examine pieces with a critical eye and to make meaning of the images and objects they view. Ultimately one would hope an observer would draw conclusions about his or her own relationship to the concept, community or theme that has been presented.

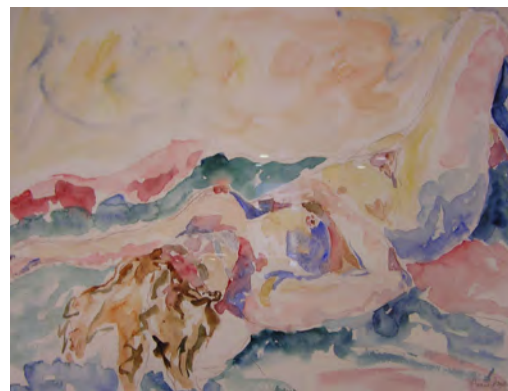
It was with these intentions that the Commuter & Non-Traditional Student Services Center at the University of North Carolina Wilmington conceived the idea of organizing student art shows highlighting the work of its own commuter and adult students in the fall of 2006. With a commuter population of over 9,000 students and an adult student population of over 3,000 students, the concept was ripe for exploration. With the generous assistance of UNCW Presents, our university's office of cultural arts, a successful collaboration was born.

It all began with some blank walls in UNCW's commuter lounge in the university's brand new Fisher Student Center. While debating what kind of art to purchase for the recently-expanded space, our staff began to instead think about how we could encourage students to participate. We asked ourselves: "Who is the primary audience for our space? What kind of art would they like to see here?" And then it dawned on us: let's let them decorate this space for themselves. How about rotating art exhibits for our commuter and non-traditional students?

This simple concept congealed at a very fast pace. A brief meeting with **Shane Fernando**, program coordinator for UNCW Presents, yielded a game plan. First, some logistics had to be addressed. His office would verify that art displayed in the commuter lounge would be covered under the university's insurance plan. Then, Commuter & Non-Traditional Student Services would need to purchase a professional gallery art hanging system (to better facilitate rotating displays without causing damage to the walls; see the end of this article for more information). This equipment was ordered with a university purchasing card and delivered within a week. Installation of the system required a work order to our university's physical plant and took another two weeks to complete.

In the meantime, a concept for the first student show was developed. The office collectively decided that an inaugural exhibit highlighting the various works of adult students would be a wonderful tie-in to our annual observation of National Non-Traditional Student Appreciation Week in November. In September a call for submissions was issued to the non-trad student community and by October five student artists had submitted works including oil paintings, watercolors and pottery. A committee composed of program coordinators, graduate assistants and undergraduate students representing both departments as well as the university's art department handled the jury process. In the end, five works from four artists were selected for the show. Students were even allowed to declare a value and sell the pieces on display.

In addition to officially unveiling the show during National Non-Trad Week, the student artists were invited to a lovely reception and asked to bring guests of their choice, including family and friends. The reception took place during an "art crawl" event, coordinated by UNCW Presents and the Association for Campus Entertainment, which encouraged other students, faculty and staff to view permanent student art collection in the building, including pieces from our special show. Art crawl participants were given a one-page list of pieces highlighted within the building, including thumbnail images and descriptions of each work, and allowed to take a self-guided tour of the building.



In the end, this program has proven to be a wonderful collaboration with many positive outcomes. Fernando concurs: "The collaborative process with the Commuter & Non-Traditional Student Services Center has been tremendously successful thus far; in addition to art majors, we have been able to gain access to students who traditionally would not have the opportunity to exhibit their work. The quality of the submissions has been exquisite and the media, diverse."



Two pieces highlighted in the Fall 2006 UNCW Non-Traditional Student Art Show:

Above: *Lynette*, watercolor, Shannon R. Bourne

Left: *Carved Lotus Jar*, stoneware, Jessica L. Phillips

A second show for the spring is already being planned. The show, titled "Commuters: Concepts of Family," will feature framed 8 x 10 black and white photos aimed at addressing the following questions: "As off-campus students, who do you consider your family during your time at college? What images most vividly illustrate a sense of "family" to you?"

### Want to organize your own art show?

If you are now thinking about developing your own art show concept, consider these benefits:

- **Create awareness in the overall academic community about the existence of commuter & non-traditional students.** Exhibits can coincide with other initiatives and events (such as National Non-Trad Week) and allow special constituencies to be viewed in different lights that break away from the stereotypical.
- **Foster a sense of pride for student artists by providing recognition.** Creating opportunities for public displays and receptions and encouraging students to invite family members such as spouses and children not only fill their hearts with pride but also reinforce to other participants that not every student is your traditional 18-23 year old college student.
- **Encourage students to create and submit original pieces of art work and contribute to the arts scene on campus.** Commuters and non-trads are often challenged to find their niche and assimilate within the university community; this type of program can provide an easy "in," facilitate networking opportunities and encourage future involvement.
- **Involve other students in the process.** In addition to students' submitting their pieces, you can also involve students in the jury process, ask for feedback about the placement of pieces, have them plan receptions, and solicit ideas for upcoming exhibits.

- **Beautify public spaces in a relatively inexpensive way.** A rotating art display adds to the beauty of a public space while promoting repeat visits by featuring continually updated and diverse works. The cost of the gallery hanging system can often be less than the purchase of one piece of art. (We purchased a stainless steel cable system which will display up to 10 pieces of art from [www.galleriesystem.com](http://www.galleriesystem.com) for around \$225.)
- **Collaborate with academic departments.** Within the student affairs profession is an ongoing discourse about bridging the gap between academic affairs and student life. This type of collaboration is a wonderful way to partner with other constituencies on campus you might normally miss working with.

If you would like any additional information about this idea, please contact Dana McKoy at [mckoyd@uncw.edu](mailto:mckoyd@uncw.edu) or 910.962.3119.

## Interesting Readings: Adult Learner Task Force

Carolyn Palmer, Associate Professor  
Bowling Green State University

I recently joined the American Association for Adult and Continuing Education (AAACE), so I now receive the *Adult Education Quarterly* (a research journal akin to the *Journal of College Student Development*) and *Adult Learning* (a professional magazine not unlike *About Campus*). The latest edition of the journal (Volume 56, Number 2) has a dynamite article about moving adult learners and their needs/interests from the margins to the centers of institutions of higher education. And the last two issues of the magazine (Volume 14, Numbers 2 and 3) have focused on “best practices” (especially loved the article on career, academic, and other forms of advising for adult students) and “GED graduates in college” (a growing group – especially at community colleges -- deserving of our attention). If you work with adult learners, but don’t want to join AAACE, I’d recommend that you check out their publications at your campus library or via your inter-library loan system. The information they contain seems oh-so-pertinent to our work with non-traditional students on campus.

## To Learn More Read, Listen, Watch: Professional Resources

Various publishers and communication groups do work to connect professionals related to commuter students and adult learners. Below are a few companies and products (publications, teleconferences, audioconferences, and more) that may be of interest. Contact companies directly to learn more.

### LRP Publications <http://www.shoplrp.com>

Nontraditional Students Report

46 Tips and 50 More Tips to Recruit and Retain Adult Students

Recruiting Adults on the Web

Adult Program Admissions: Special Standards for a Unique Population of Students

Shaping an Effective Recruitment Strategy for Adult Students in Higher Education

Student Centered Operations: A Guide to Building, Implementing, & Improving One-Stop Shops

The Complete Guide to Directing Successful Nontraditional Student Programs

In a Tight Spot: Campus Parking Solutions and Commuting Alternatives

### Magna Publications <http://www.magnapubs.com>

Community College Leader

Distance Education Report

Distance Education: Are the Benefits Worth the Costs?

Understanding and Retaining Commuter Students

Marketing to Adult Students: The Future is Already Here

Community College Leader Headline Service

**PaperClip Communications** <http://www.paper-clip.com>

Student Services for Commuter Students

The Campus Link: A Newsletter for Parents and Families

Community College Life

Best Practices for Community Colleges: Student Engagement, Involvement and Ownership

## How to Join the Commission for Commuter Students and Adult Learners

In order for you to officially “join” our commission, you need to login to the ACPA website ([www.myacpa.org](http://www.myacpa.org)) and on the member home page, scroll down to the area called “committees.” Once you click on the link, you will be taken to a list of all of the various committees/commissions/groups in ACPA. Find and click on Commission for Commuter Students and Adult Learners and then on the page that tells our description, click “Join this Committee” link at the top of the screen.

### Benefits of Membership

Joining the commission is an excellent way to begin making connections with others who work with commuter students and adult learners. Joining the commission means that you will be invited to participate in commission activities, like presenting sponsored programs, judging awards, and nominating/electing new directorate members. On occasion, “commission members-only email blasts” will be sent. These will be used only for important commission announcements like calls for programs, award nominations, and elections.

### Commission Listserv

If you are interested in engaging in dialogue with other commission members about commuter and adult student issues, please join the Commission listserv. In addition to joining the Commission, while you are on the myacpa.org webpage, also click on the Membership menu on the left side and then click “ACPA listservs.” Once at this screen you can login and join our Commission for Commuters & Adult Learners listserv. Currently, just joining the commission (as described above) does not automatically put you on the commission listserv. You can customize how you want commission listserv messages to arrive (digest form daily or even weekly).

## Contact Us!

[www.myacpa.org/comm/commuter/](http://www.myacpa.org/comm/commuter/)



Directorate Chair:  
Heather Shea Gasser  
University of Arizona  
PO Box 210021  
Tucson, AZ 85721-0021  
(520) 621-1094  
[gasser@email.arizona.edu](mailto:gasser@email.arizona.edu)